

BUSINESS INDICATORS

**AUSTRALIAN
CAPITAL
TERRITORY**

EMBARGO: 11:30AM (CANBERRA TIME) FRI 17 AUG 2001

C O N T E N T S

page

Notes	2
Summary of findings	3
Selected business indicators	5

FEATURE ARTICLE

Business Use of Information Technology (IT)	7
---	---

TABLES

1 Business indicators	10
2 ACT in relation to the rest of Australia	13
3 ACT in relation to the rest of Australia: percentage changes	14

INFORMATION

Index of Feature Articles Published in ACT Business Indicators	15
--	----

- For further information about these and related statistics, contact Barbara Dehne on Canberra 02 6207 0277 or the National Information and Referral Service on 1300 135 070.

NOTES

FORTHCOMING ISSUES

<i>ISSUE</i>	<i>RELEASE DATE</i>
September 2001	21 September 2001
October 2001	26 October 2001
November 2001	29 November 2001
December 2001	31 December 2001
January 2002	31 January 2002
February 2002	28 February 2002

SYMBOLS AND OTHER USAGES

no.	number
n.a.	not available
n.p.	not available for publication
p	preliminary
qtr	quarter
'000	thousands
%	per cent
. .	not applicable
—	nil or rounded to zero

Tracy Stewart
Regional Director, Australian Capital Territory

SUMMARY OF FINDINGS

UPDATED SERIES

Series updated since the July 2001 issue are: average retail prices, building approvals, building commencements, consumer price index, engineering construction, housing finance, industrial disputes, labour force, new motor vehicle registrations and retail turnover.

The feature article this month, on page 7, is Business Use of Information Technology (IT).

Labour force At July 2001, ACT trend employment fell slightly, down 0.3% from June 2001 to 165,800 people, while nationally trend employment remained steady at 9,147,800 people for the same period.

The trend estimate of unemployed people in the ACT during July 2001 increased to 10,900, up 5% compared with the previous month and up 36% from July 2000. Nationally, trend unemployment was up 1% from June 2001 to 682,700 people.

Compared with June 2001, the trend unemployment rate for the ACT increased by 0.2 percentage point to 6.1% in July 2001. The national trend unemployment rate remained steady at 6.9% for the same period.

The ACT trend participation rate for July 2001 fell slightly by 0.1 percentage point to 72.3% from the previous month, while the national participation rate remained steady at 63.8% for the same period.

Industrial disputes For the 12 months ended April 2001 there were 34 working days lost per thousand employees in the ACT, compared with 73 days nationally.

Building approvals In June 2001 the trend number of dwelling units approved in the ACT increased to 186, up 14% from the previous month and up 25% from June 2000. Nationally, the trend number of dwelling units approved in June 2001 was up 5% from the previous month to 11,436 dwelling units.

The value of non-residential building approvals for the ACT in June 2001 was \$21 million, an increase of 17% from the previous month. The value of new residential building approvals increased to \$40 million, up 39% from the previous month.

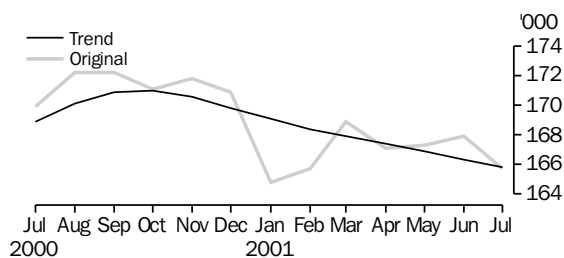
The value of total building approvals in June 2001 increased to \$66 million, up 30% from the previous month and up 37% from June 2000. Nationally, the value of total building approvals in June 2001 was \$2,760 million, down 20% from the previous month but up 4% from June 2000.

Building commencements The value of new houses commenced in the ACT in the March quarter 2001 was \$36 million, down 24% from the previous quarter and down 37% from the March quarter 2000. Nationally, the value of new houses commenced in the March quarter 2001 was \$2,514 million, down 8% from the previous quarter and down 40% from the same period last year.

Building commencements <i>continued</i>	The value of non-residential building commenced in the March quarter 2001 was \$64 million, compared with \$20 million in the previous quarter.
Engineering construction	<p>The value of public sector construction work done in the ACT during the March quarter 2001 decreased by 10% from the previous quarter and was down 22% from the March quarter 2000. Nationally, the value of public sector work done decreased by 8% from the previous quarter and was down 19% from the same period last year.</p> <p>The value of private sector engineering construction work done in the ACT during the March quarter 2000 increased by 38% from the previous quarter, but was down 42% from the March quarter 2000. Nationally, the value of private sector engineering construction work done decreased by 5% from the previous quarter and was down 10% from the March quarter 2000.</p>
Housing finance	<p>The trend number of dwelling units financed (including refinancing) in the ACT in June 2001 was 786, up 2% from the previous month. The trend estimate for the value of commitments in the ACT was \$112 million, up 4% from May 2001 and up 8% from June 2000.</p> <p>Nationally, the trend number of dwelling units financed (including refinancing) during June 2001 was 51,863, up 3% from the previous month, while the trend estimate for the value of commitments in June 2001 increased to \$7,551 million (up 4%) from the previous month.</p>
Retail turnover	Trend retail turnover in the ACT for June 2001 was \$280 million, up 1% from the previous month. The turnover for June 2001 was an increase of 15% from the June 2000 turnover of \$244 million. Nationally, trend retail turnover increased by 1% compared with the previous month and was up 10% from the same period last year.
New motor vehicle registrations	At June 2001 the trend estimate for ACT new motor vehicle registrations was 1,068, down 3% compared with the previous month and down 5% from the same period last year. Nationally, the trend for new motor vehicle registrations fell by 2% from the previous month but was up 1% from June 2000.
Consumer price index	Canberra experienced an increase of 0.9%, to 133.4 in the All Groups Index for the June quarter 2001. This was slightly higher than the increase of 0.8% for the weighted average of the eight capital cities, which increased to 133.8. There was an increase in the Canberra annual average CPI rate to June quarter 2001 of 6%, to 131.9, while the index for the weighted average of the eight capital cities also recorded an increase of 6%, to 132.2 for the same period.

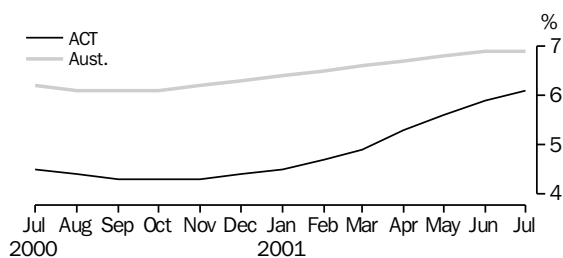
SELECTED BUSINESS INDICATORS

EMPLOYED PERSONS



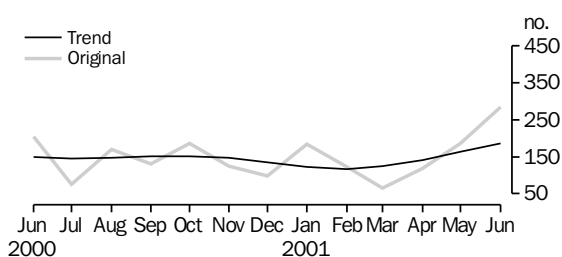
Source: Labour Force, Australia (Cat. no. 6202.0).

UNEMPLOYMENT RATE: trend series



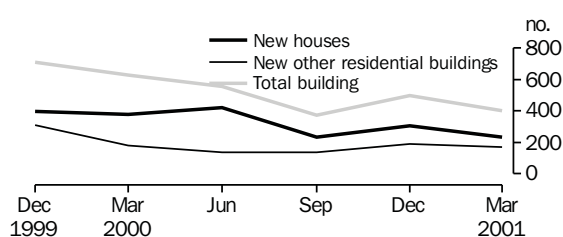
Source: Labour Force, Australia (Cat. no. 6202.0).

BUILDING APPROVALS: Dwelling units approved



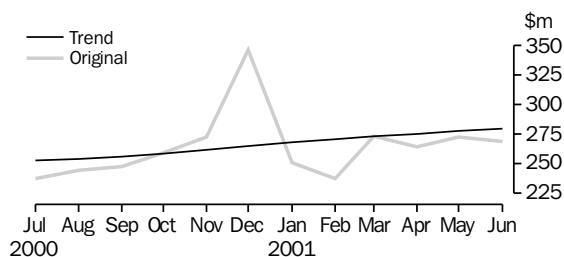
Source: Building Approvals, Australia (Cat. no. 8731.0).

DWELLING UNITS COMMENCED



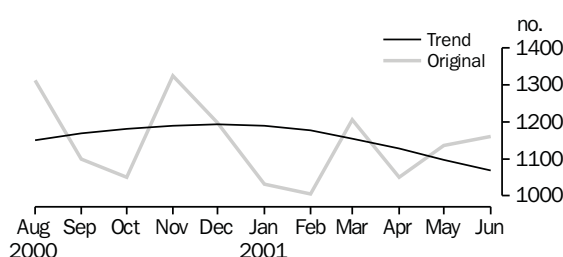
Source: Building Activity, Australia: Dwelling Unit Commencements, Preliminary (Cat. no. 8750.0).

RETAIL TRADE: Monthly turnover



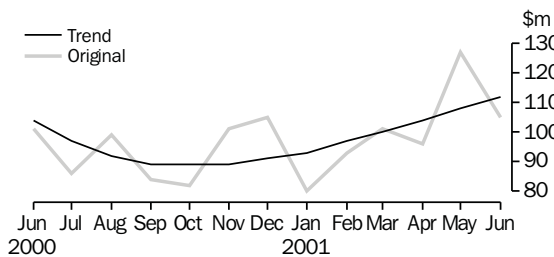
Source: Retail Trade, Australia (Cat. no. 8501.0).

NEW MOTOR VEHICLE REGISTRATIONS



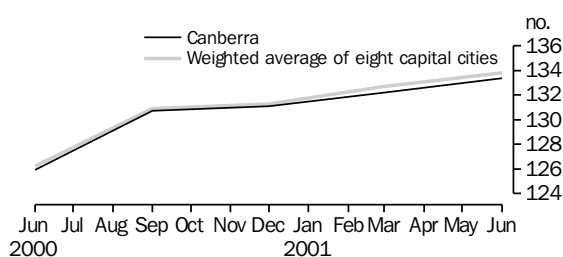
Source: New Motor Vehicle Registrations, Australia (Cat. no. 9301.0).

HOUSING FINANCE



Source: Housing Finance, Australia (Cat. no. 5609.0).

CONSUMER PRICE INDEX



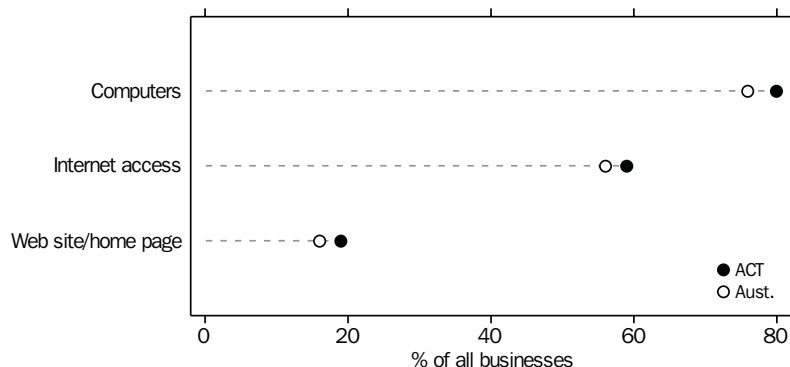
Source: Consumer Price Index, Australia (Cat. no. 6401.0).

FEATURE ARTICLE

BUSINESS USE OF INFORMATION TECHNOLOGY (IT)

Collection methodology	<p>The 1999–2000 Survey of Business Use of Computers and the Internet collected information from 12,000 businesses in the private sector across Australia. These businesses were randomly selected to represent all industries, with the exception of Agriculture, Forestry, Fishing, Education and Religious organisations and private households employing people. Previous surveys were carried out at the end of the financial years 1993–94, 1997–98 and 1999–2000. In the latter two surveys, access to the Internet and use of web sites were also measured. More details about the survey methodology can be found in the Explanatory Notes of the publication <i>Business Use of Information Technology, Australia, 1999–2000</i> (Cat. no. 8129.0).</p>
Business use of computers	<p>The use of computers in ACT businesses rose from 1997–98 by 98%. In the three months to 30 June 2000, an estimated 80% of ACT businesses had computers compared with 61% of businesses in the June quarter 1998.</p> <p>In Australia, computer use continued to grow steadily, rising from 49% of businesses in 1993–94 to 63% in 1997–98 and 76% in 1999–2000.</p>
Internet business active	<p>Internet business active was defined in the survey to include the use of the Internet for business purposes. It excluded the use of the Internet for only email and/or information searches. In 1999–2000, 56% of ACT businesses were Internet business active, compared with 46% nationally.</p>
On-line banking	<p>Almost half (49%) of the businesses with Internet access used the Internet for on-line banking, compared with 36% nationally and 37% of businesses in the eight capital cities.</p>
Selling related activities	<p>Selling related activities included receiving orders, sending invoices and providing after sales service. In the ACT, 41% of businesses with Internet access, used that access for selling related activities.</p> <p>Nationally, 28% of businesses with Internet access were engaged in selling related activities. This activity was more prevalent in businesses employing 100 or more people (93% of businesses employing 100 or more people) compared with small businesses employing less than 5 people (38% of businesses employing less than 5 people).</p> <p>In the eight capital cities of Australia, 29% of businesses with Internet access were engaged in selling related activities.</p>
Businesses with own web site/home page	<p>In 1999–2000, almost one in five (19%) ACT businesses had a web site or home page, compared with 16% nationally.</p>

BUSINESSES USING IT — 30 JUNE 2000



Source: *Business Use of Information Technology, Australia, 1999–2000* (Cat. no. 8129.0).

INTERNET SERVICE PROVIDERS

The ABS Internet Activity Survey collects quarterly data on the access characteristics of Internet Service Providers (ISPs) in Australia. The survey population includes all ISPs registered with the Telecommunications Industry Ombudsman (TIO) and those identified from other sources.

The quarterly frequency of the collection helps measure changes in the structure of the ISP industry and the number of Australian households and organisations obtaining access to the Internet through ISPs. It also measures movements in the type and amount of infrastructure available to provide Internet connectivity. The most recent data available covers the three months to March 2001.

In the three months ending March 2001, there was an increase of one ISP in the ACT compared with the December quarter 2000 and a decrease in subscribers of 1%. The average number of subscribers per access line was 8.8 at March quarter 2001, compared with 9.1 in the previous quarter.

Selected ACT highlights:

- there were 57 Internet Service Providers (ISPs) in the ACT;
- there were 62 Points of Presence (POPs);
- the number of access lines available to subscribers rose 1% from the December 2000 quarter;
- the number of subscribers fell by 1,000 to 73,000; and
- the average volume of data downloaded per subscriber was 328Mb compared with 321Mb in the previous quarter.

INTERNET SERVICE
PROVIDERS continued

Selected national highlights:

- the number of ISPs in Australia fell 4% to 665 during the March quarter 2001, following a fall of 3% between September and December quarters 2000;
- the number of Points of Presence (POPs) fell 4%;
- the number of access lines available to subscribers was down 5% from the December quarter 2000;
- the number of subscribers increased by 47,000 to 3,968,000; and
- the average volume of data downloaded per subscriber was 262Mb compared with 268Mb in the previous quarter.

		ACT			Aust.		
		% change from			% change from		
	Unit	Latest figure	Previous period	Same period previous year	Latest figure	Previous period	Same period previous year
POPULATION, VITALS AND LABOUR							
POPULATION, Dec qtr 00	'000	312.4	0.3	0.8	19 277.1	0.3	1.2
Natural increase	no.	738	5.6	11.8	29 920	7.6	-5.8
Net migration	no.	100	1 150.0	-133.0	28 058	-18.2	0.3
Total growth	no.	838	18.5	134.7	57 978	-6.6	-3.0
LABOUR FORCE							
Original series, Jul 01							
Employed	'000	165.7	-1.3	-2.5	9 191.0	0.3	0.1
Unemployed	'000	9.9	1.0	50.0	617.6	-5.6	13.9
Unemployment rate	%	5.6	0.1	1.9	6.3	-0.4	0.7
Participation rate	%	71.8	-1.0	-0.9	63.6	-0.1	-0.3
Long-term unemployed, Jun 01	no.	1 781	-22.2	-18.8	164 282	0.8	-2.4
Long-term unemployed as percentage of total unemployed, Jun 01	%	18.2	-5.6	-6.1	25.1	0.8	-2.6
Trend series, Jul 01							
Employed	'000	165.8	-0.3	-1.8	9 147.8	—	0.4
Unemployed	'000	10.9	4.8	36.3	682.7	0.8	13.9
Unemployment rate	%	6.1	0.2	1.6	6.9	—	0.7
Participation rate	%	72.3	-0.1	-0.6	63.8	—	—
WAGE AND SALARY EARNERS, Mar qtr 01							
Number employed, trend series							
Private sector	'000	87.9	2.4	5.1	5 922.6	0.1	3.4
Public sector	'000	69.7	0.4	0.7	1 451.3	-0.1	-0.8
Total	'000	157.6	1.5	3.1	7 373.9	0.1	2.5
Gross earnings, original series							
Private sector	\$m	660.7	0.4	9.4	49 862.3	-4.5	7.8
Public sector	\$m	948.3	12.6	2.9	15 719.3	-1.3	1.6
Total	\$m	1 609.0	7.2	5.5	65 581.7	-3.8	6.2
JOB VACANCIES, May qtr 01	'000	2.5	-19.4	-16.7	83.4	-12.7	-18.3
INDUSTRIAL DISPUTES IN PROGRESS, Apr 01							
Working days lost	'000	—	-100.0	—	29.1	-17.8	-31.0
Days lost per '000 employees (year ended Apr 01)	no.	34.0	126.7	17.2	73.0	-1.4	-21.5
HOUSING AND BUILDING ACTIVITY							
HOUSING FINANCE, Jun 01							
Secured commitments to individuals for							
Original series							
Construction of dwellings	\$m	10.0	42.9	—	923.0	1.9	51.8
Purchase of new dwellings	\$m	6.0	-25.0	20.0	312.0	3.0	25.8
Purchase of established dwellings(a)	\$m	89.0	-20.5	4.7	6 571.0	-7.8	38.5
Refinancing	\$m	17.0	-19.0	13.3	1 599.0	-8.6	35.3
Total housing commitments	\$m	105.0	-17.3	4.0	7 807.0	-6.3	39.4
Seasonally adjusted series							
Total housing commitments	\$m	108.0	-10.0	4.9	7 802.0	4.4	43.3
Trend series							
Total housing commitments	\$m	112.0	3.7	7.7	7 551.0	3.7	34.8
Dwelling units financed	no.	786	1.7	-0.5	51 863	2.7	23.1
PRICE INDEX							
Established house price index, Mar qtr 01	no.	150.5	2.8	7.5	153.9	2.2	6.9
BUILDING APPROVALS, Jun 01							
Original series							
Dwelling units	no.	285	52.4	39.7	11 724	-10.5	4.2
Value of new residential	\$m	40.0	39.4	48.1	1 568.2	-9.5	12.6
Value of residential alterations and additions(b)	\$m	4.9	19.5	88.5	295.7	-11.3	14.9
Value of non-residential	\$m	21.1	16.6	12.2	895.8	-35.5	-10.5
Value of total building	\$m	66.1	29.9	36.6	2 759.9	-20.1	4.1
Trend series							
Dwelling units	no.	186	14.1	24.8	11 436	5.4	1.0

(a) Includes refinancing.

(b) Includes conversion jobs.

		ACT			Aust.		
		% change from			% change from		
	Unit	Latest figure	Previous period	Same period previous year	Latest figure	Previous period	Same period previous year
HOUSING AND BUILDING ACTIVITY continued							
BUILDING COMMENCEMENTS, Mar qtr 01							
New houses	no.	231	-24.8	-39.2	16 919	-11.8	-46.6
Value of houses commenced	\$m	36.2	-23.6	-36.8	2 513.8	-7.9	-40.0
Value of non-residential building commenced	\$m	63.5	222.3	-28.5	2 853.5	2.4	2.8
Value of total commencements	\$m	134.8	30.4	-29.8	7 539.4	-2.0	-19.8
ENGINEERING CONSTRUCTION, Mar qtr 01							
Private sector							
Value of work commenced	\$m	36.2	217.5	-49.6	2 068.8	-32.8	-40.0
Value of work done	\$m	32.8	38.4	-41.5	2 590.2	-5.0	-9.7
Value of work yet to be done	\$m	26.7	8.5	-26.0	4 579.2	-7.4	-19.0
Public sector							
Value of work done	\$m	18.3	-10.3	-21.8	1 534.9	-7.7	-19.4
PRICES, WAGES AND CONSUMER SPENDING							
CONSUMER PRICE INDEX, Jun qtr 01(a)							
Food	no.	141.0	1.1	7.6	138.8	0.9	6.6
Housing(b)	no.	108.9	0.8	8.3	108.4	0.2	7.1
Transportation(b)	no.	142.6	2.7	4.5	139.4	2.0	5.5
All groups	no.	133.4	0.9	6.0	133.8	0.8	6.0
AVERAGE WEEKLY EARNINGS, Feb 01							
Full-time adult ordinary time earnings							
Original series							
Males	\$	1 017.0	-0.1	5.7	858.3	1.0	4.1
Females	\$	850.1	-0.7	5.0	728.4	1.3	5.4
Persons	\$	933.5	-0.6	4.4	810.6	1.0	4.6
Trend series							
Males	\$	1 020.4	1.1	5.9	857.2	0.7	4.2
Females	\$	850.7	0.5	4.0	727.2	1.2	5.3
Persons	\$	937.8	0.7	4.3	809.7	0.8	4.7
WAGE COST INDEX, Mar qtr 01(c)							
Public sector	no.	110.0	0.8	3.5	112.6	1.3	3.8
Private sector	no.	111.6	0.8	4.1	111.4	0.9	3.6
Total	no.	110.6	0.7	3.8	111.7	1.0	3.7
RETAIL TURNOVER, Jun 01							
Trend series							
Food retailing	\$m	101.4	0.5	12.7	5 379.1	0.5	10.0
Department stores	\$m	27.3	0.7	5.4	1 120.5	-0.2	2.4
Hospitality and services	\$m	50.5	1.6	38.4	2 390.7	0.5	14.4
All other retailing	\$m	100.5	0.6	10.1	4 620.9	0.8	10.1
Total	\$m	279.7	0.8	14.8	13 511.2	0.5	10.1

(a) Base year: 1989-90 = 100.0.

(b) The 14th Series *Australian Consumer Price Index* was introduced September quarter 2000. Some changes include an updated commodity classification and weighting pattern and changes in composition of some groups. For more details of changes, refer to Information Paper: Introduction of the 14th Series *Australian Consumer Price Index* (Cat. no. 6456.0) released 29 September 2000.

(c) Base of each index is September quarter 1997 = 100.0.

		ACT			Aust.		
		% change from			% change from		
	Unit	Latest figure	Previous period	Same period previous year	Latest figure	Previous period	Same period previous year
TOURIST ACCOMMODATION, Mar qtr 01							
Original series							
Room nights occupied	'000	267.5	-1.6	-1.4	10 188.5	-3.4	1.0
Room occupancy rate	%	59.4	0.4	-1.5	57.7	-1.1	-0.5
Guest nights	'000	454.9	-0.9	2.5	18 460.7	-1.7	2.4
Guest arrivals	'000	209.3	7.6	4.7	8 031.3	-2.1	1.3
Takings from accommodation	\$'000	29 452.0	1.7	7.9	1 191 842.0	-3.9	9.5
NEW MOTOR VEHICLE REGISTRATIONS, Jun 01							
Original series	no.	1 160	2.2	9.5	70 652	7.9	16.1
Seasonally adjusted series	no.	993	-8.4	14.5	58 954	-4.8	21.3
Trend series	no.	1 068	-2.6	-5.1	60 268	-2.0	1.2
STATE ACCOUNTS, Mar qtr 01							
Trend series (chain volume measure)(a)(b)							
General government final consumption expenditure	\$m	2 358	-1.3	-4.3	29 640	0.8	2.2
Household final consumption expenditure	\$m	1 797	1.1	4.7	95 936	1.1	3.2
Private gross fixed capital formation	\$m	326	-4.1	-21.1	28 026	-3.2	-11.2
Public gross fixed capital formation	\$m	209	-7.1	-13.6	6 735	0.5	-1.0
State final demand	\$m	4 696	-0.7	-3.1	160 322	0.2	—
GROSS STATE PRODUCT (trend, chain volume measures), 1999-00 (b)							
	\$m	12 669	4.9	..	620 963	4.3	..
PRIVATE NEW CAPITAL EXPENDITURE, Mar qtr 01							
Original series (at current prices)							
Buildings and structures	\$m	51	6.3	142.9	1 911	-30.4	-30.9
Equipment, plant and machinery	\$m	66	-13.2	-7.0	6 929	-10.3	-0.2
Total	\$m	117	-5.6	27.2	8 841	-15.6	-8.9
Trend series (at current prices)							
Buildings and structures	\$m	62	31.9	169.6	2 102	-14.0	-25.8
Equipment, plant and machinery	\$m	74	4.2	-3.9	7 612	1.2	-0.2
Total	\$m	136	15.3	36.0	9 714	-2.5	-7.1
BUSINESS EXPECTATIONS, TRADING PERFORMANCE, OPERATING INCOME							
Short term, expected change previous quarter, Sep qtr 01	%	1.0	-1.2
Medium term, expected change previous year, Jun qtr 02	%	2.5	0.4

(a) Quarterly state final demand details are released as a special data service (Cat. no. 5206.0.40.001).

(b) Reference year for chain volume measures is 1998-99.

Source: Australian Demographic Statistics (Cat. no. 3101.0); Australian National Accounts: Quarterly State Details (Cat. no. 5206.0.40.001); Average Weekly Earnings, States and Australia (Cat. no. 6302.0); Building Activity, Australia (Cat. no. 8752.0); Building Approvals, Australia (Cat. no. 8731.0); Consumer Price Index (Cat. no. 6401.0); Housing Finance, Australia (Cat. no. 5609.0); House Price Indexes (Cat. no. 6416.0); Industrial Disputes, Australia (Cat. no. 6321.0); Job Vacancies, Australia (Cat. no. 6354.0); Labour Force, Australia, Preliminary (Cat. no. 6202.0); New Motor Vehicle Registrations, Australia Preliminary (Cat. no. 9301.0); Private New Capital Expenditure, State Estimates (Cat. no. 5646.0); Retail Trade, Australia (Cat. no. 8501.0); Tourist Accommodation, Australia (Cat. no. 8635.0); Wage Cost Index, Australia (Cat. no. 6345.0).

	Unit	Latest period	NSW	Vic.	Qld	SA	WA	Tas.	NT	ACT	Aust.
POPULATION	'000	Dec qtr 00	6 502.6	4 797.4	3 597.2	1 500.5	1 897.4	470.1	196.3	312.4	19 277.1
LABOUR FORCE, trend series											
Employed persons	'000	Jul 01	3 065.7	2 310.5	1 703.5	674.9	935.0	197.6	98.2	165.8	9 147.8
Unemployment rate	%	Jul 01	6.0	6.4	8.6	7.7	7.7	8.7	7.4	6.1	6.9
WAGE AND SALARY EARNERS, trend series											
Private sector	'000	Mar qtr 01	1 935.1	1 627.9	1 050.1	423.7	619.1	118.9	53.9	87.9	5 922.6
Public sector	'000	Mar qtr 01	459.6	305.5	291.9	111.7	150.8	40.9	22.7	69.7	1 451.3
Total	'000	Mar qtr 01	2 394.7	1 933.4	1 342.0	535.4	769.9	159.8	76.6	157.6	7 373.9
STATE ACCOUNTS											
Gross state product (chain volume measures)(a)	\$m	1999-00	221 375	157 915	103 691	41 381	66 525	11 367	6 466	12 669	620 963
PRIVATE NEW CAPITAL EXPENDITURE											
Total (at current prices), trend series	\$m	Mar qtr 01	3 329	2 459	1 391	707	1 372	123	206	136	9 714
BUILDING APPROVALS											
Dwelling units approved, original series	no.	Jun 01	2 882	3 334	2 396	736	1 781	127	183	285	11 724
Dwelling units approved, trend series	no.	Jun 01	2 950	3 288	2 442	653	1 454	139	131	186	11 436
Value of non-residential building approved, original series	\$m	Jun 01	252.0	216.2	276.9	51.5	62.8	6.8	8.5	21.1	895.8
Value of all buildings approved, original series	\$m	Jun 01	788.3	800.0	596.1	150.0	288.0	24.5	47.0	66.1	2 759.9
ENGINEERING CONSTRUCTION, original series											
Value of engineering construction work done	\$m	Mar qtr 01	1 322.0	824.8	1 019.4	244.1	556.4	75.1	32.1	51.1	4 125.1
AVERAGE WEEKLY EARNINGS, trend series											
Full-time adult ordinary time earnings	\$	Feb 01	844.8	790.0	762.4	772.8	828.7	738.1	811.9	937.8	809.7
RETAIL TRADE TURNOVER, trend series	\$m	Jun 01	4 646.3	3 278.6	2 545.2	1 002.0	1 316.0	295.6	138.2	279.7	13 511.2
TOURIST ACCOMMODATION, original series											
Room nights occupied	'000	Mar qtr 01	3 421.1	1 787.2	2 635.2	547.1	942.7	335.1	252.6	267.5	10 188.5
Room occupancy rate	%	Mar qtr 01	57.9	62.1	55.9	58.4	54.4	68.2	44.9	59.4	57.7
NEW MOTOR VEHICLE REGISTRATIONS, trend series	no.	Jun 01	19 978	16 483	11 734	3 896	5 358	1 184	567	1 068	60 268
	Unit	Latest period	Syd,	Melb.	Bris.	Adel.	Perth	Hob.	Dar.	Canb.	Aust.
CONSUMER PRICE INDEX(b)											
Food	no.	Jun qtr 01	139.3	138.8	138.5	139.4	138.1	136.0	137.0	141.0	138.8
Housing	no.	Jun qtr 01	117.1	98.8	112.6	104.9	101.6	107.2	122.4	108.9	108.4
Transportation	no.	Jun qtr 01	140.8	138.6	137.3	140.4	139.6	134.6	135.4	142.6	139.4
All Groups	no.	Jun qtr 01	135.0	133.0	134.0	135.1	131.4	133.4	132.2	133.4	133.8
AVERAGE RETAIL PRICES											
Milk, supermarket sales (1 litre)	cents	Jun qtr 01	135	145	141	136	146	131	151	128	..
Bread, white loaf, sliced, supermarket sales (650g)(c)	cents	Jun qtr 01	250	258	242	238	240	260	248	246	..
Beef, rump steak (1kg)	cents	Jun qtr 01	1 448	1 388	1 302	1 409	1 334	1 222	1 350	1 398	..
Chicken, frozen (1kg)	cents	Jun qtr 01	333	341	320	342	386	401	424	353	..
Potatoes (1kg)	cents	Jun qtr 01	133	205	165	111	153	107	167	145	..
Coffee, instant (150g jar)	cents	Jun qtr 01	635	635	613	582	678	691	631	644	..
Scotch nip, public bar (30ml)	cents	Jun qtr 01	386	373	320	409	422	315	376	325	..
Private motoring petrol (1 litre)											
Super grade(d)	cents	Jun qtr 01	97.5	94.8	87.1	98.0	97.0	100.1	106.4	100.8	..
Unleaded	cents	Jun qtr 01	94.3	91.7	84.0	95.0	93.9	97.4	103.5	97.8	..

(a) Experimental series. Users are cautioned these estimates are derived indirectly by calculating a deflator from the expenditure components of the state series concerned. Therefore, in general, the sum of the state estimates does not equal the estimates for Australia. Reference year for chain volume measures is 1988-99.

(b) Base year: 1989-90 = 100.0. The 14th Series *Australian Consumer Price Index* was introduced September quarter 2000. Some changes include an updated commodity classification and weighting pattern and changes in composition of some groups. For more details of changes, refer to Information Paper: Introduction of the 14th Series *Australian Consumer Price Index* (Cat. no. 6456.0) released 29 September 2000.

(c) 680g in Hobart and Darwin.

(d) Includes lead replacement petrol where applicable.

	<i>Latest period</i>	<i>NSW</i>	<i>Vic.</i>	<i>Qld</i>	<i>SA</i>	<i>WA</i>	<i>Tas.</i>	<i>NT</i>	<i>ACT</i>	<i>Aust.</i>
POPULATION	Dec qtr 00	0.3	0.3	0.4	0.1	0.3	—	0.1	0.3	0.3
LABOUR FORCE, trend series										
Employed persons	Jul 01	0.1	-0.1	0.2	—	-0.1	-0.3	0.9	-0.3	—
Unemployment rate	Jul 01	0.1	0.1	-0.1	0.1	0.2	—	0.4	0.2	—
WAGE AND SALARY EARNERS, trend series										
Private sector	Mar qtr 01	-1.1	1.8	1.4	-0.5	2.7	2.7	-2.0	2.4	0.1
Pubic sector	Mar qtr 01	-0.4	0.3	-0.3	-0.6	1.4	0.5	1.8	0.4	—
Total	Mar qtr 01	-0.9	1.6	1.0	-0.5	2.4	2.1	-0.9	1.5	0.1
STATE ACCOUNTS										
Gross state product (chain volume measures)(a)	1999-00	3.7	4.6	6.3	3.5	4.6	1.1	—	4.9	4.3
PRIVATE NEW CAPITAL EXPENDITURE										
Total (at current prices), trend series	Mar qtr 01	-6.6	-2.7	-8.4	-0.3	10.7	-7.5	36.4	15.3	-2.5
BUILDING APPROVALS										
Dwelling units approved, original series	Jun 01	-17.3	-9.1	-21.9	3.8	3.3	-5.2	39.7	52.4	-10.5
Dwelling units approved, trend series	Jun 01	2.4	3.1	7.2	5.3	6.3	13.9	18.0	14.1	5.4
Value of non-residential building approved, original series	Jun 01	-5.3	-58.2	1.8	-46.2	-60.2	-74.5	-75.9	16.6	-35.5
Value of all buildings approved, original series	Jun 01	-10.4	-31.2	-12.7	-21.8	-25.1	-46.3	-15.8	29.9	-20.1
ENGINEERING CONSTRUCTION, original series										
Value of engineering construction work done	Mar qtr 01	-10.4	7.6	-13.0	-7.3	-2.3	39.9	-28.5	15.9	-6.0
AVERAGE WEEKLY EARNINGS, trend series										
Full-time adult ordinary time earnings	Feb 01	0.5	0.9	1.1	1.7	1.0	-0.3	0.4	0.7	0.8
RETAIL TRADE TURNOVER, trend series	Jun 01	0.4	0.7	0.4	0.7	0.5	0.2	0.3	0.8	0.5
TOURIST ACCOMMODATION, original series										
Room nights occupied	Mar qtr 01	-2.2	5.2	-9.7	-0.8	-7.2	24.3	-20.5	-1.6	-3.4
Room occupancy rate	Mar qtr 01	-1.8	2.7	-4.7	1.6	-2.8	14.6	-10.5	0.4	-1.1
NEW MOTOR VEHICLE REGISTRATIONS, trend series	Jun 01	-2.3	-2.1	-1.0	-1.3	-2.6	-1.9	-0.7	-2.6	-2.0
	<i>Latest period</i>	<i>Syd.</i>	<i>Melb.</i>	<i>Bris.</i>	<i>Adel.</i>	<i>Perth</i>	<i>Hob.</i>	<i>Dar.</i>	<i>Canb.</i>	<i>Aust.</i>
CONSUMER PRICE INDEX(b)										
Food	Jun qtr 01	0.1	1.5	1.0	—	2.1	1.3	1.6	1.1	0.9
Housing	Jun qtr 01	0.5	-0.3	-0.2	0.5	0.5	0.3	-0.7	0.8	0.2
Transportation	Jun qtr 01	1.7	1.8	2.1	2.5	2.6	2.4	2.7	2.7	2.0
All Groups	Jun qtr 01	0.7	0.6	1.0	0.7	1.4	1.0	1.1	0.9	0.8
AVERAGE RETAIL PRICES										
Milk, carton, supermarket sales	Jun qtr 01	—	—	—	0.7	2.1	4.0	—	1.6	..
Bread, white loaf, sliced, supermarket sales	Jun qtr 01	1.2	0.8	3.4	2.6	2.1	3.6	5.1	0.4	..
Beef, rump steak	Jun qtr 01	9.9	15.6	11.9	9.3	6.5	5.9	10.7	4.6	..
Chicken, frozen	Jun qtr 01	-10.7	-9.5	-5.3	-10.9	4.6	8.4	2.9	-8.1	..
Potatoes	Jun qtr 01	4.7	28.1	11.5	19.4	—	-14.4	18.4	5.8	..
Coffee, instant (jar)	Jun qtr 01	4.6	4.6	11.5	—	-0.3	-0.4	7.7	4.2	..
Scotch nip, public bar	Jun qtr 01	1.3	1.4	0.9	2.3	0.7	1.0	—	1.2	..
Private motoring petrol										
Super grade(c)	Jun qtr 01	3.2	1.2	4.6	4.9	4.3	3.4	4.6	3.6	..
Unleaded	Jun qtr 01	3.3	1.2	4.7	5.1	4.4	3.5	5.0	3.7	..

(a) Experimental series. Users are cautioned these estimates are derived indirectly by calculating a deflator from the expenditure components of the state series concerned. Therefore, in general, the sum of the state estimates does not equal the estimates for Australia. Reference year for chain volume measures is 1998-99.

(b) Base year: 1989-90 = 100.0. The 14th Series *Australian Consumer Price Index* was introduced September quarter 2000. Some changes include an updated commodity classification and weighting pattern and changes in composition of some groups. For more details of changes, refer to Information Paper: Introduction of the 14th Series *Australian Consumer Price Index* (Cat. no. 6456.0) released 29 September 2000.

(c) Includes lead replacement petrol where applicable.

INDEX OF FEATURE ARTICLES PUBLISHED IN ACT BUSINESS INDICATORS

<i>Issue</i>	<i>Title</i>	<i>Page reference</i>
Aug 2001	Business Use of Information Technology (IT)	7
Jul 2001	Motor Vehicle Use in the ACT	7
Jun 2001	Cleaning Services Industry in the ACT	7
May 2001	Working Arrangements and Superannuation in the ACT	6
Apr 2001	Job Search Experience of Unemployed Persons in the ACT	7
Mar 2001	Population Growth in the ACT	6
Feb 2001	Labour Mobility in the ACT	7
Jan 2001	Child Care Industry in the ACT	7
Dec 2000	Cafes and Restaurants Industry in the ACT	6
Dec 2000	Legal Services Industry in the ACT	8
Nov 2000	Manufacturing Industry in the ACT	6
Oct 2000	Computing Services Industry 1998–99	6
Sep 2000	Motor Vehicle Use in the ACT	6
Aug 2000	Household Expenditure on Goods and Services in the ACT	6
Jul 2000	Small Business in the ACT	6
Jun 2000	Sports Attendance	7
Jun 2000	Attendance at Selected Cultural Venues	8
May 2000	Employee Earnings, Benefits and Trade Union Membership	7
Apr 2000	Emergency Services and Public Transport Usage in the ACT	8
Mar 2000	Forms of Employment	6
Feb 2000	Job Search Experience of Unemployed Persons	6
Jan 2000	Transition from Education to Work, May 1999	6
Dec 1999	Structure of the ACT Economy	6
Dec 1999	Participation in Sport and Physical Activities	7
Nov 1999	Crime and Safety in the ACT	6
Oct 1999	Labour Force Experience in the ACT	6
Sep 1999	Career Experience in the ACT	7
Sep 1999	Carers in the ACT	9
Aug 1999	Stock of Human Resources in Science and Technology	6
Jul 1999	Persons with a Disability in the ACT	6
Jun 1999	Participation in Education in the ACT	6
May 1999	Transition from Education to Work of Persons Aged 15-64 in the ACT	7
Apr 1999	Persons Not in the Labour Force in the ACT	6
Mar 1999	Education and Labour Force Status of the ACT's Young People	6
Feb 1999	Income and Living Standards in the ACT	6
Jan 1999	Education and Training Experience of ACT Resident	6
Dec 1998	Families and Labour Force Status in the ACT	6
Nov 1998	Retrenchment and Redundancy in the ACT	6
Nov 1998	Retail Turnover in the ACT	9
Oct 1998	Research and Experimental Development in the ACT	6
Sep 1998	Labour Force Mobility in the ACT	6
Sep 1998	Income Distribution in the ACT	8
Aug 1998	ACT Investors in Rental Dwellings	6
Jul 1998	Retirement and Retirement Intentions	6
Jun 1998	Profile of Small Business in the ACT	7

FOR MORE INFORMATION...

- INTERNET** www.abs.gov.au the ABS web site is the best place to start for access to summary data from our latest publications, information about the ABS, advice about upcoming releases, our catalogue, and Australia Now—a statistical profile.
- LIBRARY** A range of ABS publications is available from public and tertiary libraries Australia-wide. Contact your nearest library to determine whether it has the ABS statistics you require, or visit our web site for a list of libraries.
- CPI INFOLINE** For current and historical Consumer Price Index data, call 1902 981 074 (call cost 77c per minute).
- DIAL-A-STATISTIC** For the latest figures for National Accounts, Balance of Payments, Labour Force, Average Weekly Earnings, Estimated Resident Population and the Consumer Price Index call 1900 986 400 (call cost 77c per minute).

INFORMATION SERVICE

Data which have been published and can be provided within five minutes are free of charge. Our information consultants can also help you to access the full range of ABS information—ABS user-pays services can be tailored to your needs, time frame and budget. Publications may be purchased. Specialists are on hand to help you with analytical or methodological advice.

- PHONE** **1300 135 070**
- EMAIL** **client.services@abs.gov.au**
- FAX** 1300 135 211
- POST** Client Services, ABS, GPO Box 796, Sydney 1041

WHY NOT SUBSCRIBE?

ABS subscription services provide regular, convenient and prompt deliveries of ABS publications and products as they are released. Email delivery of monthly and quarterly publications is available.

- PHONE** 1300 366 323
- EMAIL** subscriptions@abs.gov.au
- FAX** 03 9615 7848
- POST** Subscription Services, ABS, GPO Box 2796Y, Melbourne 3001



2130380008018
ISSN 1320-808X

RRP \$17.50